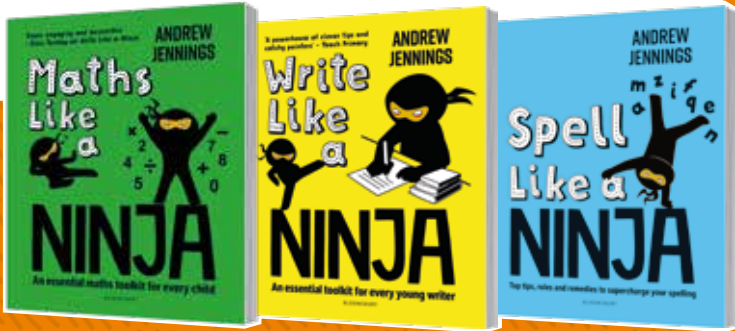


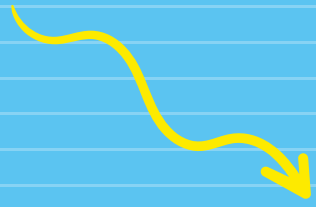
AVAILABLE NOW!



Match Up

All of these words have been chopped in half! Can you draw a line to match the correct halves together? The first one has been done for you.

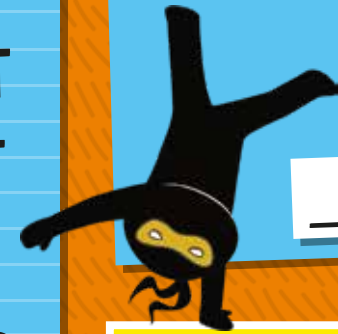
- | | |
|------|-----|
| NIN | ROT |
| CAR | SET |
| SUN | JA |
| THUN | DER |



Word Jumble

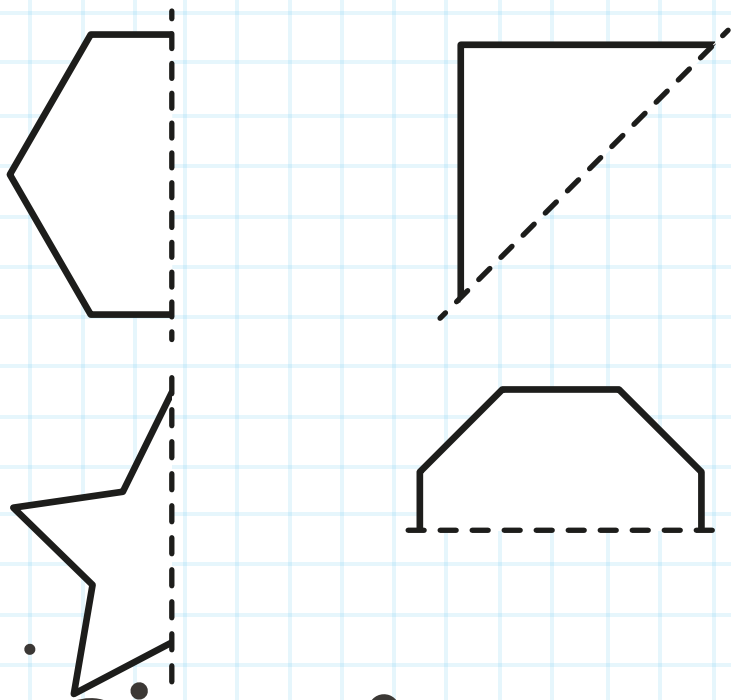
Can you unscramble these letters to reveal the word?

P L S E L



Mirror Lines

When something is symmetrical, it has two matching halves. Draw in the missing halves of these shapes and then colour them in.



Greater Than, Smaller Than

We can use these symbols < > to show which number is larger and which is smaller. Can you use the right symbol to show which number is bigger? The first one has been done for you.

> means the first number is BIGGER
< means the first number is SMALLER

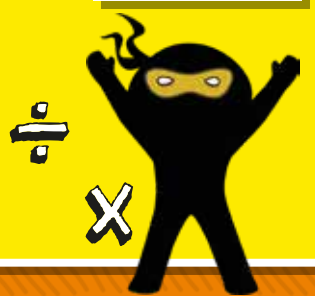
- | | |
|------------------------------|------------------------------|
| 1. 4 < 7 | 5. 10 <input type="text"/> 4 |
| 2. 3 <input type="text"/> 10 | 6. 1 <input type="text"/> 9 |
| 3. 6 <input type="text"/> 2 | 7. 4 <input type="text"/> 3 |
| 4. 2 <input type="text"/> 8 | 8. 10 <input type="text"/> 5 |



Re-verb

Verbs are 'doing' words - they help us describe an action or how a character or object is behaving, for example; give, talk, jump and yell. Can you think of a verb starting with each of the letters below?

- | | |
|------------------------|------------------------|
| A <input type="text"/> | C <input type="text"/> |
| D <input type="text"/> | R <input type="text"/> |
| S <input type="text"/> | L <input type="text"/> |
| P <input type="text"/> | H <input type="text"/> |
| T <input type="text"/> | O <input type="text"/> |
| G <input type="text"/> | |
| B <input type="text"/> | |



Symbol Search

How many maths symbols like the ones in the black splat can you find on this page?

NOT including the examples or any on the book cover!



Forming Fractions

A fraction is used to represent parts of a whole. Can you fill in the circles below to correctly show the fractions? The first one has been done for you.

$\frac{2}{4}$ (so 2 out of the 4 sections has been coloured in)

$\frac{4}{5}$ $\frac{1}{3}$

$\frac{4}{6}$ $\frac{5}{8}$ $\frac{3}{10}$

As Useful as a Simile

Similes compare two objects by using 'like' and 'as' to help the reader create an image in their mind, for example 'as big as a house'. Can you come up with some ideas to finish the similes below?

- Mia's hands trembled **LIKE**...
- She was brave **AS A**...
- The sheets were soft **AS**...
- The wind howled **LIKE A**...

Times Tables

Can you work out these multiplication sums?

- $2 \times 5 =$
- $7 \times 3 =$
- $4 \times 6 =$
- $9 \times 2 =$
- $8 \times 4 =$

Same Sounds

Homophones are words that sound the same, but have different spellings and meanings. Can you write out the correct words to match these homophones?

- ALoud** →
- FLOUR** →
- PIECE** →
- THROUGH** →
- WAIST** →
- WHEATHER** →

Contractions

'Contract' means 'shorten or shrink'. Contractions are where two words are joined together to form a single word with an apostrophe. Can you write the correct contractions for these words? The first one has been done for you.

- CAN NOT** **CAN'T**
- YOU ARE**
- HE HAD**
- WOULD NOT**

WIN

A BOOK BUNDLE FIT FOR A NINJA!



ENTER AT: [WHIPPERSNAPPERKIDS.COM/NINJA](http://whippersnapperkids.com/ninja)

Competition closes 30/10/23. Terms and conditions apply. See website for details.